

CUBE FLOW

Thermal Store Range

The thermal store range providing the perfect space saving solution with bespoke design flexibility



McDonald
Water Storage

Hot Water Storage Solutions

CUBE *FLOW*

Thermal Store Range Providing Space Saving Solution With Bespoke Design Flexibility

The CUBEflow thermal store range is specifically designed for restricted spaces, providing a high performance, mains pressure hot water solution.

Our thermal store approach can suit multiple installation applications, including electric, boiler or central plant inputs to meet hot water demand.

With our unique design, manufacturing and space saving solution, we can offer significant cost savings both during installation and ongoing running costs.

CONTENTS

CUBEflow OV

Compatible with Open Vented Boiler

CUBEflow SB

Compatible with Sealed Boiler or Central Plant Boiler

CUBEflow Multifuel

Compatible with a wide range of heat sources including renewable energy



Discover The Benefits Of **CUBEflow** Thermal Stores

When it comes to mains pressure hot water storage solutions, **don't be restricted to a cylinder option!**

Our CUBEflow rectangular thermal store provides the ultimate space saving hot water solution whilst allowing for bespoke design for installation requirements.

With the rectangular design of the store, it takes up to 27% less space than an equivalent volume cylinder, freeing up space for other uses, essential within apartment applications.

The CUBEflow also provides the perfect replacement for original Elson Coral E and Coral Si.



Tailor Made To Suit Any Installation Requirement



Our unique approach to manufacturing our CUBEflow thermal stores ensures the tank meets your exact requirements.

We can bespoke design the CUBEflow to fit into the tightest spaces, whether it is underneath a sink unit or on a specifically designed frame so that space below can be utilised for either a washing machine or freed up for additional storage.

In addition to the standard configurations, every thermal store can be supplied with custom connections, positioned exactly where you need them to minimise pipework and installation costs.

Thermal Store Advantages

For Both Installers and Homeowners



A thermal store provides many additional benefits over an unvented cylinder, not only for the homeowner but the installer and specifier including;

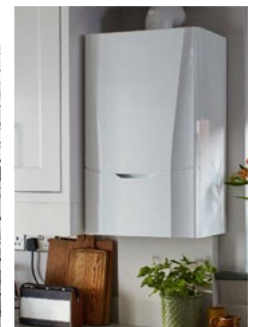
- No risk of legionella as the domestic hot water is mains cold water instantaneously heated, not stored water
- No annual safety service requirement as open vented and inherently safe, removing ongoing maintenance costs
- No discharge pipework providing flexibility of installation
- Bespoke manufacture to suit any installation requirement
- No G3 certification required for installation

Maximise ALL Of Your Homes Available Energy Sources

In these times of high energy bills, it is essential to maximise all the available energy sources, especially renewables, to reduce your running costs.

CUBEflow offers the perfect solution, with the ability to maximise all energy sources to provide your hot water.

Our bespoke manufactured Multifuel models can incorporate heat sources such as solid fuel, solar thermal or low carbon generated electricity.



CUBE FLOW



Open Vented Boiler Compatible

The CUBEflow is a direct thermal store, but with the additional flexibility to incorporate an open vented boiler, to provide mains pressure hot water. It is also the direct replacement for the original Elson Coral E range.

This thermal store can be used with an open vented boiler and/ or off-peak electricity to aggregate the supply to heat the store, and provide domestic hot water when it is required, keeping running costs for the householder down to a minimum.

Being open vented it is inherently safe and therefore does not require any discharge pipework as unvented cylinders, which can prove problematic in apartment installations.

The CUBEflow is available in standard sizes (shown below) or bespoke manufactured to the specific installation requirements, providing the ultimate hot water solution.

COMPONENTS

1. Ballvalve
2. 15mm Overflow - Header Tank
3. Inspection Lid (Header Tank)
4. 22mm Hot Draw Out - c/w TMV
5. Expansion Chamber
6. 22mm Cold Mains In
7. 1/2" Drain
8. 2" Dial Temperature Gauge
9. 3kW Immersion Heater (On Peak)
10. 3kW Immersion Heater (Off Peak)
11. 22mm Boiler Return
12. 22mm Boiler Flow
13. Thermostat Pocket

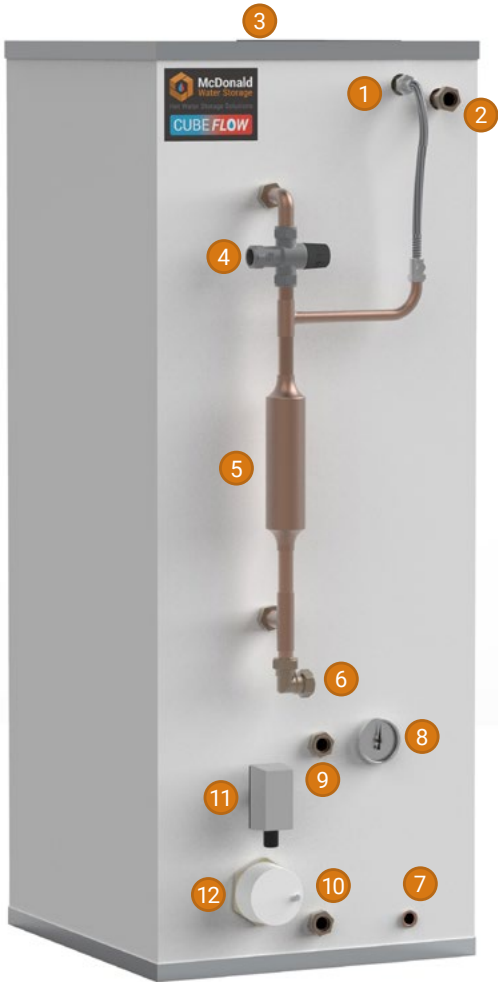
KEY BENEFITS

- Mains pressure hot water
- Compatible with open vented boiler
- Maximises the benefit of off-peak electric
- No discharge pipework
- No annual maintenance
- No G3 certification required for installation
- Incorporated automatic fill F&E tank
- Bespoke design available with other sizes available on request
- Optional DHW pipework insulation

Model No.	RTE100	CC150TE	CC210TE	RTE250
Storage Capacity	100	150	210	250
Height	865	1285	1285	1285
Depth	570	525	570	615
Width	495	495	585	615
ERP Class	C	C	C	C
Standing Heat Loss (watts)	59	68	78	85
Bedrooms	1	1-2	2-3	3-4
Baths / Showers	1	1	2	2

Sizes shown above are indicative only and all model sizes are available to be bespoke designed to suit installation requirements.

CUBE FLOW



Sealed/Central Plant Boiler Compatible

The CUBEflow is an indirect thermal store, with the flexibility to incorporate a sealed boiler or central plant boiler, to provide mains pressure hot water. It is also the direct replacement for the original Elson Coral Si range.

It can be used with a sealed or central plant boiler and/or off-peak electricity to aggregate the supply to heat the store, keeping running costs to a minimum for the householder. Being open vented, the store does not require any discharge pipework associated with unvented cylinders.

Where utilised in central plant applications it;

- enables central plant to be turned off in summer months
- provides immersion back up if central boiler fails

The CUBEflow is available in standard sizes (shown below) or bespoke manufactured to the specific installation requirements, providing the ultimate hot water solution.

COMPONENTS

1. Ballvalve
2. 15mm Overflow - Header Tank
3. Inspection Lid (Header Tank)
4. 22mm Hot Draw Out - c/w TMV
5. Expansion Chamber
6. 22mm Cold Mains In
7. 1/2" Drain
8. 2" Dial Temperature Gauge
9. 22mm Boiler Flow
10. 22mm Boiler Return
11. Thermostat
12. 3kW Immersion Heater

KEY BENEFITS

- Mains pressure hot water
- Compatible with sealed system or central plant boiler
- Maximises the benefit of off-peak electric
- No discharge pipework
- No annual maintenance
- No G3 certification required for installation
- Incorporated automatic fill F&E tank
- Bespoke design available with other sizes available on request
- Optional DHW pipework insulation

Model No.	RTB100	CC150TB	CC210TB	RTB250
Storage Capacity	100	150	210	250
Height	865	1285	1285	1285
Depth	570	525	570	615
Width	495	495	585	615
ERP Class	C	C	C	C
Standing Heat Loss (watts)	59	68	78	85
Bedrooms	1	1-2	2-3	3-4
Baths / Showers	1	1	2	2

Sizes shown above are indicative only and all model sizes are available to be bespoke designed to suit installation requirements.

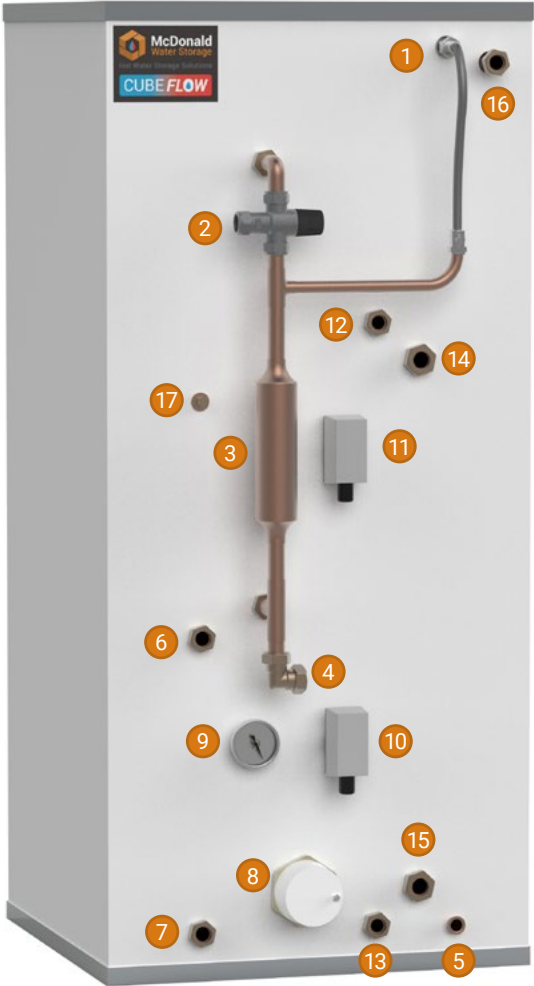
CUBE FLOW

Multifuel Variant

The CUBEflow multifuel thermal store allows the incorporation of multiple heat sources into a single tank. Utilising the available renewable heat sources means other heat sources are only utilised when renewables are unable to cope with demand.

The example opposite shows how your solid fuel appliance can be incorporated, so the system can be heated without the need for gas, oil or electric, to provide both heating and hot water.

The unit can be installed anywhere in the property, normally the top floor or attic. Providing the primary feed and expansion tank is at the highest level, the entire system can remain open vented, or with a sealed heating kit if this is not possible.



COMPONENTS

1. Ballvalve
2. 22mm Hot Draw Out (c/w TMV)
3. Expansion Chamber
4. 22mm Cold Mains In
5. 1/2" Drain
6. 22mm Central Heating Flow
7. 22mm Central Heating Return
8. 3kW Immersion Heater
9. 2" Dial Temperature Gauge
10. Control Stat
11. High-Limit Stat
12. 22mm Boiler Flow
13. 22mm Boiler Return
14. 28mm Solid Fuel Flow
15. 28mm Solid Fuel Return
16. 22mm Overflow
17. 1/2" Female for Relief Valve

Example connection configuration only

KEY BENEFITS

- Excellent solution for tight spaces
- Incorporates multiple heat inputs
- Solid fuel connections
- Optional solar coil
- Bespoke design available with other sizes available on request
- Available with steel frame to raise tank
- Optional heating tappings, either open vented or sealed system coil
- Optional DHW pipework insulation

Model No.

Storage Capacity	150	210	250	300
Height	1285	1285	1285	1285
Depth	525	570	615	640
Width	495	585	615	640
ERP Class	C	C	C	C
Standing Heat Loss (watts)	68	78	85	94
Bedrooms	1-2	2-3	3-4	4
Baths / Showers	1	2	2	2

Sizes shown above are indicative only and all model sizes are available to be bespoke designed to suit requirements. Call to discuss heating requirement specification.

Discover Our Complete Range Of Hot Water Storage Solutions

Thermal Stores

Unvented Cylinders

Elson Replacement Solutions

Open Vented and Combination Cylinders

Commercial Cylinders

Bespoke Design and Manufacture



For full details on a product range
click on the category above or
go to mcdonaldwaterstorage.com



McDonald
Water Storage

Hot Water Storage Solutions

Pride in our
service, quality
and tradition



QUEENSWAY INDUSTRIAL ESTATE | GLENROTHES | FIFE | KY7 5QF

T: 01592 611123 | E: sales@mcdonaldwaterstorage.com

www.mcdonaldwaterstorage.com

