

CUBE FLOW

THERMAL STORE RANGE
FOR SPACE RESTRICTED APPLICATIONS



McDonald
Water Storage

Hot Water Storage Solutions

Our new CUBEflow thermal store range is specifically designed for installations into restricted spaces, providing a high performance, mains pressure hot water solution which delivers enormous benefits.

Our thermal store approach can suit multiple installation applications, including electric, boiler or central plant inputs to meet hot water demand. With our unique design, manufacturing and space saving solution, we can offer significant cost savings both during installation and ongoing running costs.

Discover The Benefits of a CUBEflow Thermal Store

- Designed to take up 27% less space than a cylinder, freeing up valuable space for other uses
- No costly pumps and electronic controls required - providing piping hot water even during a power outage
- Delivers mains pressure hot water with scald protection and inherent safety of an open vented system
- Flexibility with models to incorporate an open vented, sealed or central plant boiler
- No discharge pipework – flexibility for installation position
- Fit and forget solution – with no G3 certification required
- Bespoke manufactured support frameworks available, allowing for units to be sited above washing machines
- Being copper provides complete peace of mind, killing 99% of bacteria and no risk of Legionella as the hot water is instantaneously heated

WHY CUBEFLOW

Manufactured from premium grade copper, our CUBEflow mains pressure hot water system delivers unrivalled performance thanks, in part, to copper's superior thermal transfer properties.

One of our key advantages is the extra long finned copper coil which we incorporate into every CUBEflow tank. This ensures greater flow rates, improves efficiency and reduces ongoing costs.

The CUBEflow thermal stores tank design allows installers to meet the required volume of hot water for an installation, but reduce the space required by up to 27%.

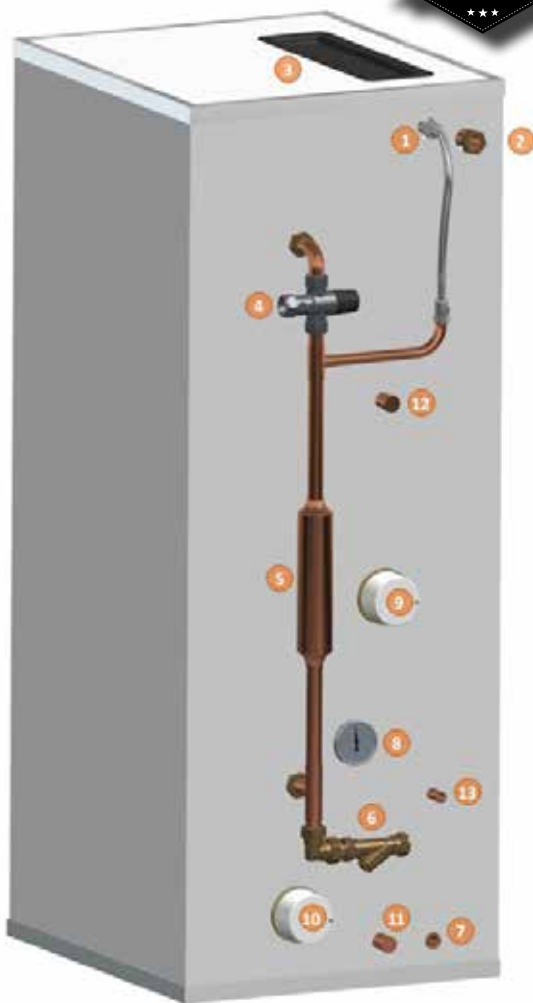
In addition to the standard size range, we can manufacture the CUBEflow to specifically meet your installation requirements.

CONTENTS

CUBEflow compatible with Open Vented Boiler	3
CUBEflow compatible with Sealed Boiler or Central Plant Boiler	4

THERMAL STORE SOLUTION FOR SPACE RESTRICTED INSTALLATIONS

27% LESS SPACE REQUIRED THAN AN EQUIVALENT VOLUME CYLINDER



Open Vented Boiler Compatible

The CUBEflow is a direct thermal store, but with the additional flexibility to incorporate an open vented boiler, to provide mains pressure hot water. It is also the direct replacement for the original Elson Coral E range.

This thermal store can be used with an open vented boiler and/or off-peak electricity to aggregate the supply to heat the store, and provide domestic hot water when it is required, keeping running costs for the householder down to a minimum.

Being open vented it is inherently safe, and therefore does not require any discharge pipework associated with unvented cylinders, which can prove problematic in apartment installations.

The CUBEflow is available in standard sizes (shown below) or bespoke manufactured to the specific installation requirements, providing the ultimate hot water solution.

COMPONENTS

- | | |
|-----------------------------------|-------------------------------------|
| 1. Ballvalve | 8. Temperature Gauge |
| 2. Overflow - Header Tank | 9. 3kW Immersion Heater (On Peak) |
| 3. Inspection Lid (Header Tank) | 10. 3kW Immersion Heater (Off Peak) |
| 4. Hot Draw Out - c/w TMV | 11. Boiler Return |
| 5. Expansion Chamber | 12. Boiler Flow |
| 6. Cold Mains In - c/w Y Strainer | 13. Thermostat Pocket |
| 7. Drain | |

KEY BENEFITS

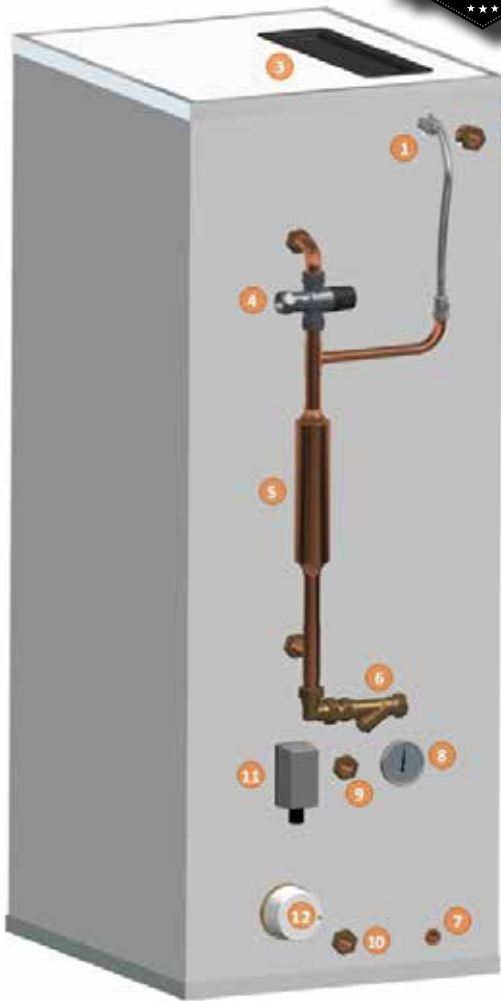
- Compatible with open vented boiler
- Maximises the benefit of off-peak electricity supply
- No discharge pipework
- No annual maintenance
- No G3 certification required for installation

All Units to Following Specification:

- Incorporated Feed and Expansion Tank
- 22mm DHW Coil & Mixing Valve
- 22mm Flow & Return for Vented Boiler
- 3kW LWD Immersion Heaters (inc. thermostats) Fitted
- 1 Boiler Control Thermostat Pocket

STORAGE CAPACITY	100	150	210	250
Model No.	RTE100	CC150TE	CC210TE	RTE250
ERP Class	C	C	C	C
Standing Heat Loss (watts)	60	68	78	85
Height	865	1285	1285	1260
Width	570	570	570	600
Depth	495	495	585	600
Bedrooms	1	1-2	2-3	3-4
Baths / Showers	1 Shower	1 Bath	2 Baths	2 Baths

**SUITABLE FOR USE WITH
OFF PEAK ELECTRICITY
AND OPEN VENTED
BOILERS**



Sealed/Central Plant Boiler Compatible

The CUBEflow is an indirect thermal store, with the flexibility to incorporate a sealed boiler or central plant boiler, to provide mains pressure hot water. It is also the direct replacement for the original Elson Coral Si range.

It can be used with a sealed or central plant boiler and/or off-peak electricity to aggregate the supply to heat the store, keeping running costs to a minimum for the householder.

Being open vented, the store does not require any discharge pipework associated with unvented cylinders.

Where utilised in central plant applications, it provides additional benefits including;

- enable central plant to be turned off in summer months
- immersion back up if central boiler fails

The CUBEflow is available in standard sizes (shown below) or bespoke manufactured to the specific installation requirements, providing the ultimate hot water solution.

COMPONENTS

- | | |
|-----------------------------------|--------------------------|
| 1. Ballvalve | 7. Drain |
| 2. Overflow - Header Tank | 8. Temperature Gauge |
| 3. Inspection Lid (Header Tank) | 9. Boiler Flow |
| 4. Hot Draw Out - c/w TMV | 10. Boiler Return |
| 5. Expansion Chamber | 11. Thermostat |
| 6. Cold Mains In - c/w Y Strainer | 12. 3kW Immersion Heater |

KEY BENEFITS

- Compatible with sealed system or central plant boiler
- Maximises the benefit of off-peak electricity supply
- No discharge pipework
- No annual maintenance
- No G3 certification required for installation

All Units to Following Specification:

- Incorporated Feed and Expansion Tank
- 22mm DHW Coil & Mixing Valve
- 22mm Flow & Return for Sealed System or Central Plant Boiler
- 3kW LWD Immersion Heater (inc. thermostats) Fitted
- 1 Boiler Control Thermostat Pocket

STORAGE CAPACITY	100	150	210	250
Model No.	RTB100	CC150TB	RTB210	RTB250
ERP Class	C	C	C	C
Standing Heat Loss (watts)	60	68	78	85
Height	865	1285	1285	1260
Width	570	570	570	600
Depth	495	495	585	600
Bedrooms	1	2 - 3	3 - 4	4 - 5
Baths / Showers	1 Shower	1 Bath	2 Baths	2 Baths

**SUITABLE FOR USE WITH
OFF PEAK ELECTRICITY
AND SEALED SYSTEM
OR CENTRAL PLANT
BOILERS**



McDonald
Water Storage

QUEENSWAY INDUSTRIAL ESTATE | GLENROTHES | FIFE | KY7 5QF
T: 01592 611123 | F: 01592 611166 | E: sales@mcdonaldwaterstorage.co.uk

www.mcdonaldwaterstorage.co.uk

